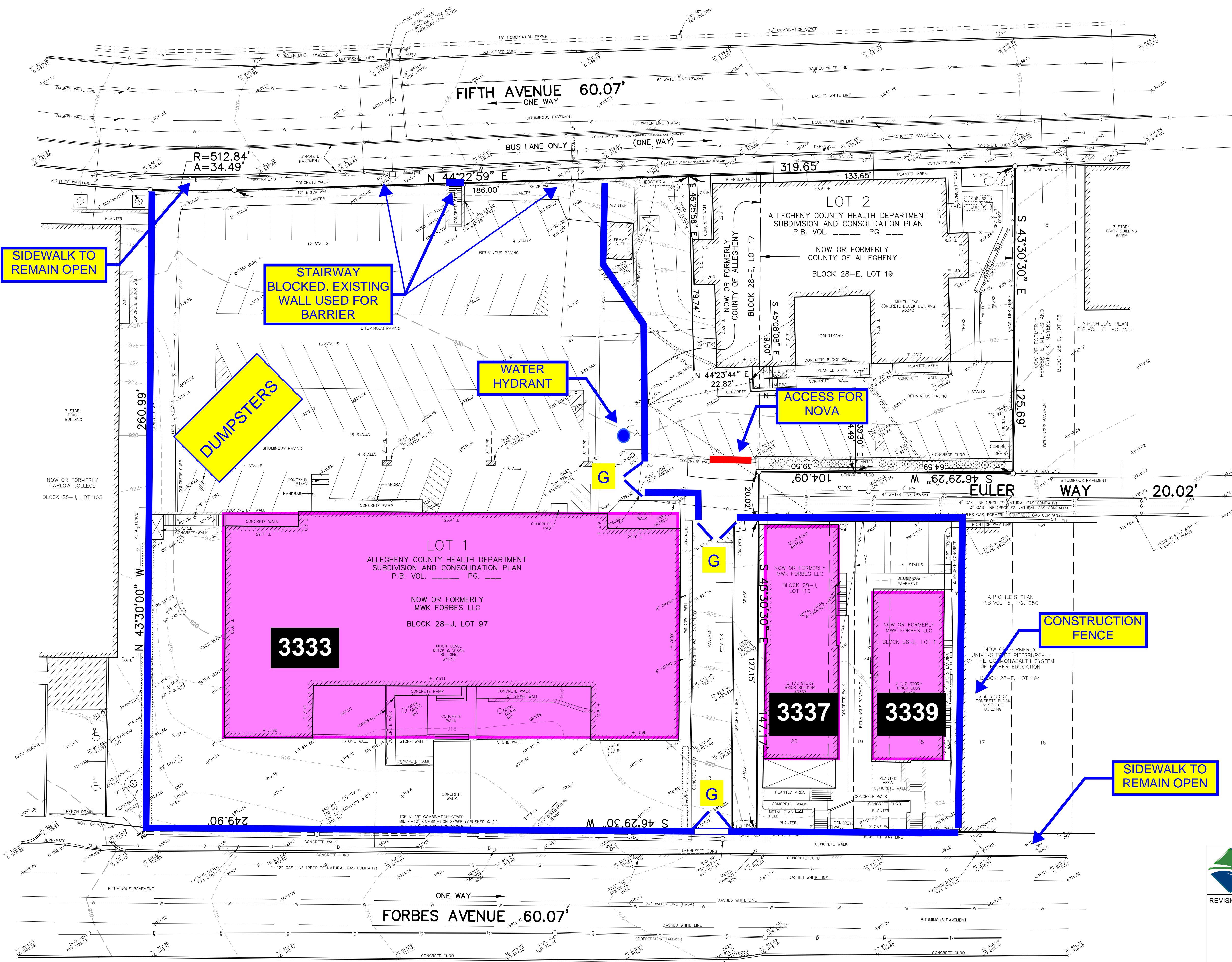


3333/3337/3339 FORBES  
DEMOLITION PLAN  
REVISED 9/25/2014

3333

BUILDING TO BE DEMOLISHED



LEGEND

G	- GUTTER	OH	- OVERHEAD WIRES
TC	- TOP CURB	W	- SUBSURFACE WATERLINE
TS	- TOP SLOPE	D	- SUBSURFACE VERIZON COMMUNICATION LINE
BS	- BOTTOM SLOPE	G	- SUBSURFACE GAS LINE
TW	- TOP WALL	E	- SUBSURFACE ELECTRIC LINE
BW	- BOTTOM WALL	SW	- EXISTING INLET
BOL	- BOLLARD	EM	- EXISTING MANHOLE
MH	- MANHOLE	ES	- EXISTING SEWER
TOP	- TOP OF CASTING	PWC	- PITTSBURGH WATER AND SEWER AUTHORITY
BOT	- BOTTOM OF STRUCTURE	DLC	- DUCHESS LIGHT COMPANY
FL	- FLOW LINE	VZPA	- VERIZON PENNSYLVANIA
WV	- WATER VALVE	BTCC	- BELL TELEPHONE CO. (now VZPA)
WPM	- WATER PAINT MARK	WPM	- WATER PAINT MARK
STD	- STANDARD	GPMT	- GAS PAINT MARK
CO	- CLEANOUT	EPMT	- ELECTRIC PAINT MARK
PM	- PARKING METER	RCP	- REINFORCED CONCRETE PIPE
GM	- GAS METER	TOP	- TERRA COTTA PIPE
EM	- ELECTRIC METER	X 908.8	- EXISTING SPOT ELEVATION
WM	- WATER METER	- 908 -	- EXISTING CONTOURS
TRANS	- TRANSFORMER		

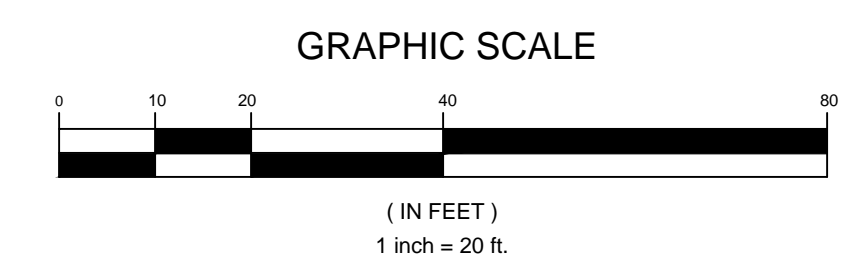
NOTE: THE UNDERGROUND UTILITIES SHOWN HEREON HAVE NOT BEEN PHYSICALLY LOCATED BY THE SURVEYOR, HOWEVER, THE INFORMATION WAS OBTAINED FROM EXISTING PLANS AND SURFACE FACILITIES. THE GATEWAY ENGINEERS, INC. MAKES NO GUARANTEE THAT THE UNDERGROUND UTILITIES SHOWN COMPRISE ALL SUCH UTILITIES IN THE AREA, EITHER IN SERVICE OR ABANDONED. THE GATEWAY ENGINEERS, INC. DOES NOT WARRANT THAT THE UNDERGROUND UTILITIES SHOWN ARE IN THE EXACT LOCATION INDICATED ALTHOUGH THEY ARE SHOWN AS ACCURATELY AS POSSIBLE FROM THE INFORMATION AVAILABLE.

The Gateway Engineers, Inc.  
Full-Service Civil Engineering & Surveying  
400 Holiday Drive, Suite 300, Pittsburgh, PA 15220  
gatewayengineers.com 855-634-9284

REVISIONS:

**PLAN OF EXISTING CONDITIONS**  
SITUATE IN  
4th WARD - CITY OF PITTSBURGH  
ALLEGHENY COUNTY, PA

MADE FOR  
**AUDG HOLDINGS, LLC**



DATE: JUNE, 20, 2014  
SCALE: 1"=20'  
PROJECT No.: C-13908-0007  
DRAWING No.: 402.881

Path & File Name: G:\Projects\13000\13908\0007 Survey Due Diligence\DWG\02-Sheet\13908-0007 VEC.dwg  
 Plot Date: 9/25/2014 4:30 PM  
 User: Kenneth C. Winkler  
 Save Date: 9/25/2014 4:30 PM