



pittsburgh city planning

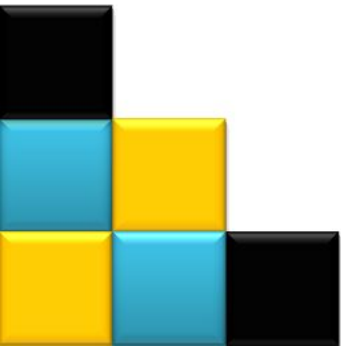
Lawn + Ophelia Park

August 2016



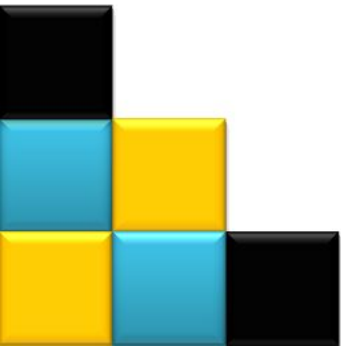
Agenda

- Background
- Open Space Plan
- Naturalization Process
- City-Wide Stormwater Management - PWSA
- Next Steps
- Q+A



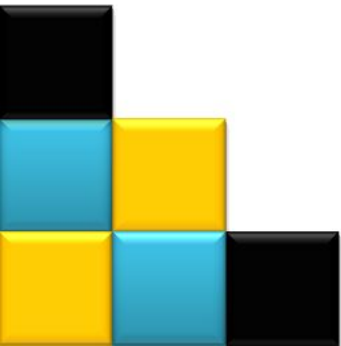
Open Space Plan (2013)

- Open Space, Parks, and Recreation Plan
- A joint project of CitiParks and the DCP
- A guide to the optimal use of the City's Open Space
- A document based on data analysis and public input to be the gameplan for the City's open spaces
- 25-year Vision
- 3,500 residents participated



Open Space Plan (2013)

- Population changes over time
 - Park system built for 670,000 population, 305,000 now
 - Created an informal layer of vacant and distressed properties that the City has to deal with the effects of.
- Change in park / recreation trends
 - Mobile population, able to travel further for better facilities and focused on more than just neighborhood recreation
 - Wider variety of interests and demands for our public open space
- Incorporation of the natural system into the urban environment
- Set the developable framework of the City by determining what we take off-line



Walksheds

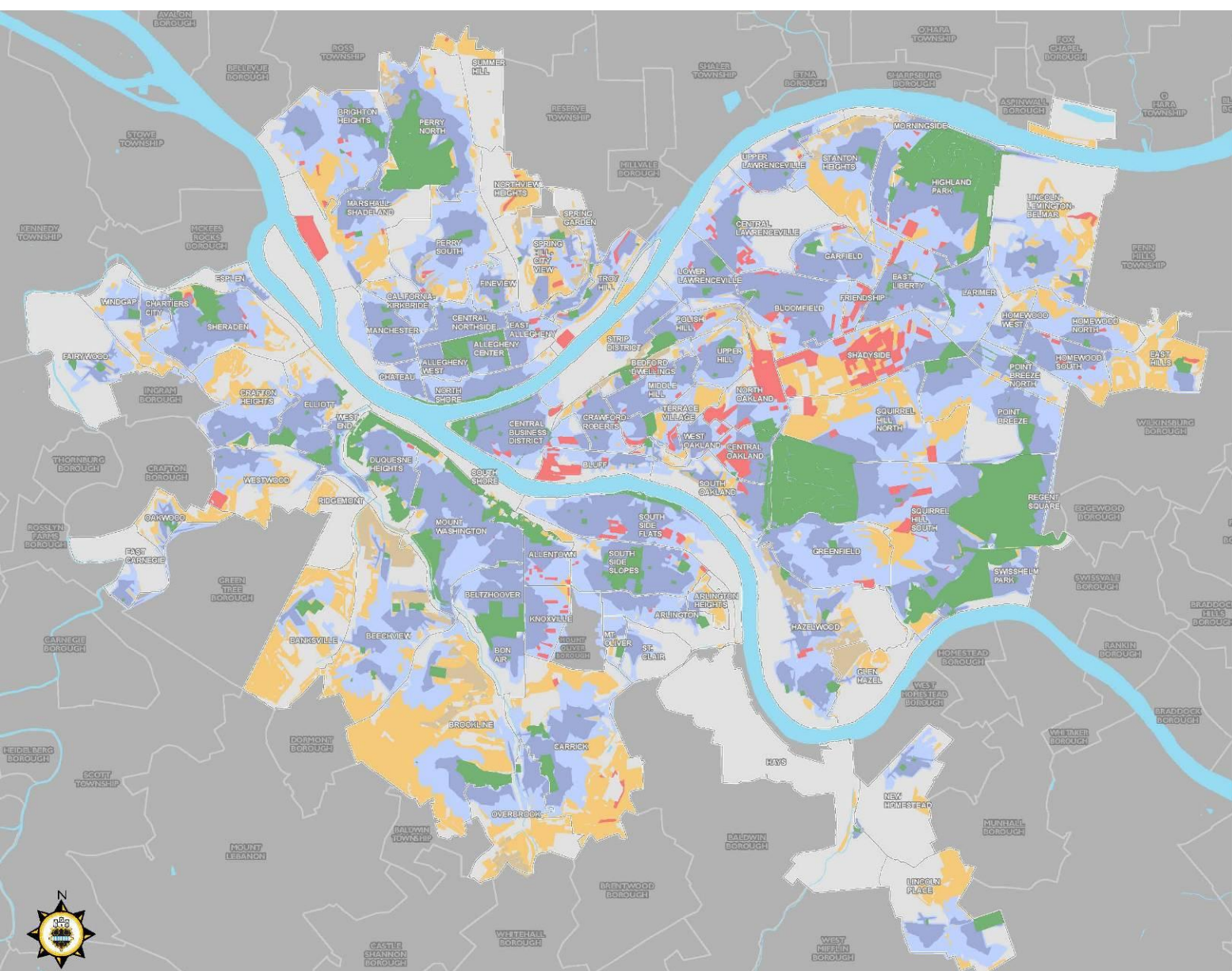
PLAN PGH

OPENSOURCE

MAP: 3 - WALKSHEDS AND UNDERSERVED AREAS

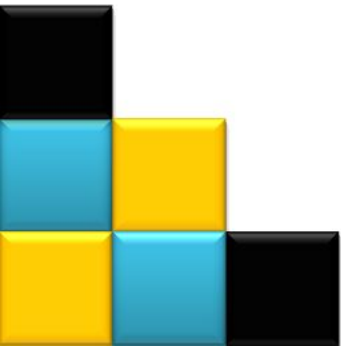
- 1/4 Mile Walk Area
- 1/2 Mile Walk Area
- Underserved High Density
- Underserved Moderate Density
- Low Density to No Population
- Park
- Greenway
- Other Municipality
- Neighborhood
- Water

Density Break Down
 High - above 30.29 persons per acre
 Moderate - between 5.91 and 30.28 persons per acre
 Low - below 5.90 persons per acre

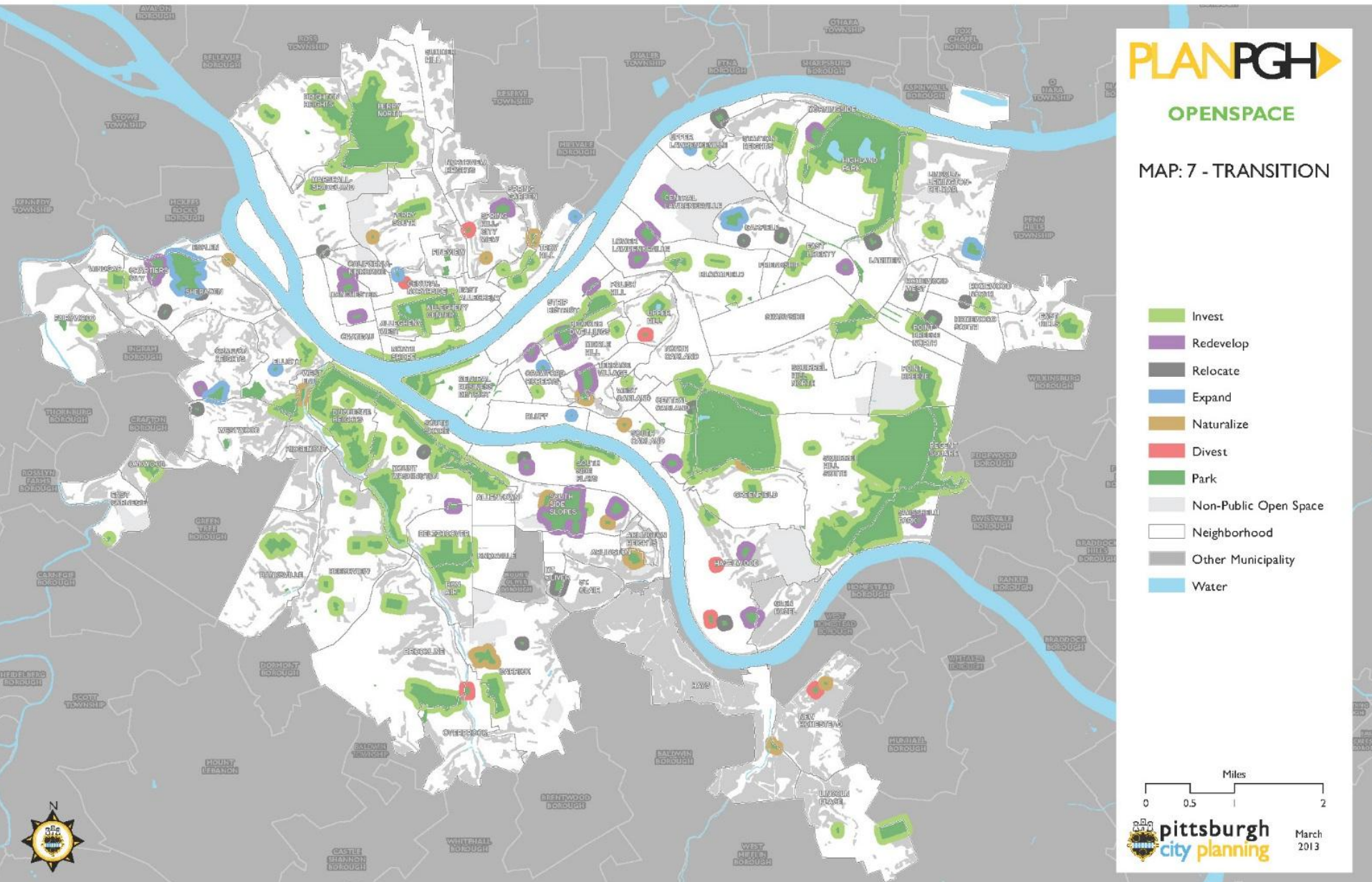


Park Recommendations

- INVEST
- REDEVELOP
- RELOCATE
- EXPAND
- NATURALIZE
- DIVEST



Recommendations



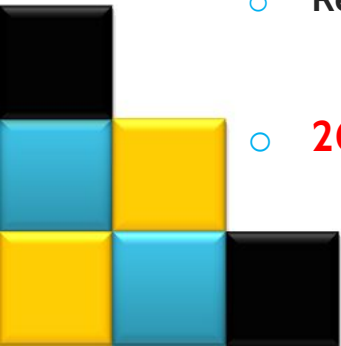
Open Space Plan Recommendation

○ Lawn and Ophelia Park

- Lawn and Ophelia Park (0.4 ac.) is located in the neighborhood of South Oakland (15213) at the intersection of Lawn and Ophelia Street. It consists of a play area that is adjacent to a Hwy 885 off ramp.
- **Recommendation: *DIVEST* or *NATURALIZE***
 - Focus investment at Niagara Park, and create better pedestrian connections from this area of South Oakland to Niagara Park.
 - Due to its zoning (R1A-VH) and the development pressure in Oakland, it may be possible to market this site for the construction of townhouses. If an alternate owner cannot be secured, the site should be naturalized.

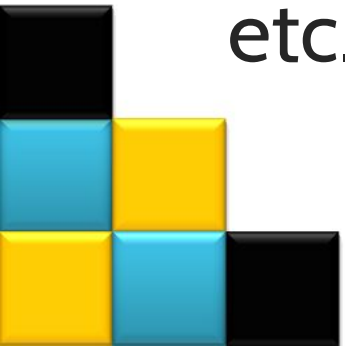
○ Niagara Park

- Niagara Park (0.2 ac.) is located in South Oakland (15213) at the corner of Craft Avenue and Niagara Street. It has a play area and a half-court basketball court and sitting area arranged in a half circle facing Niagara St.
- **Recommendation: INVEST**
 - Invest in improvements at Niagara Park. Remove fencing, enhance the play area including providing shaded seating. Green the site and add more neighborhood park features.
- **2017 Capitol Budget Request for Park Improvements**



Naturalize

- **Naturalize.** Revegetate the property with appropriate species (riparian or upland), restore ecosystem or riparian processes, or remove invasive species or non-native vegetation (including turf grass). This may include development of low impact trails and other compatible features (viewing blinds, environmental education features, etc.).

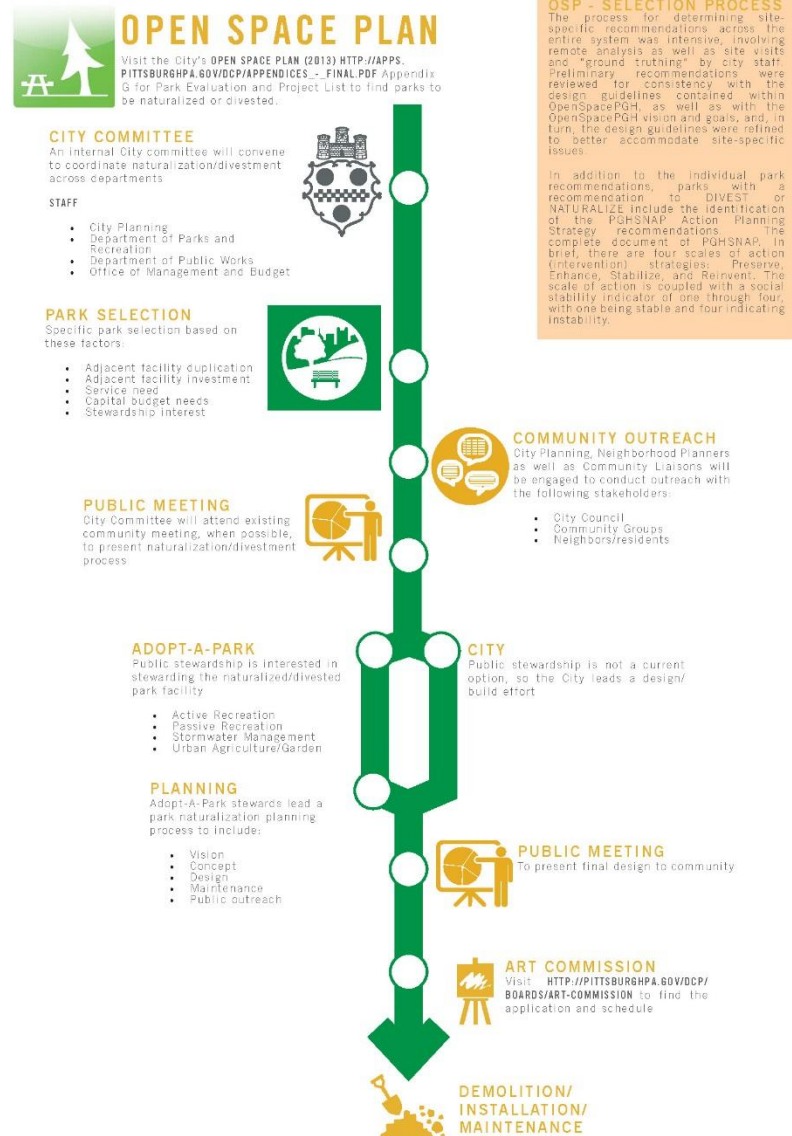


Process

Options

- Community Stewardship
 - Adopt-A-Park
- City- Design/build

PITTSBURGH'S PARK NATURALIZATION PROCESS



CITY-WIDE STORMWATER ASSESSMENT

approach

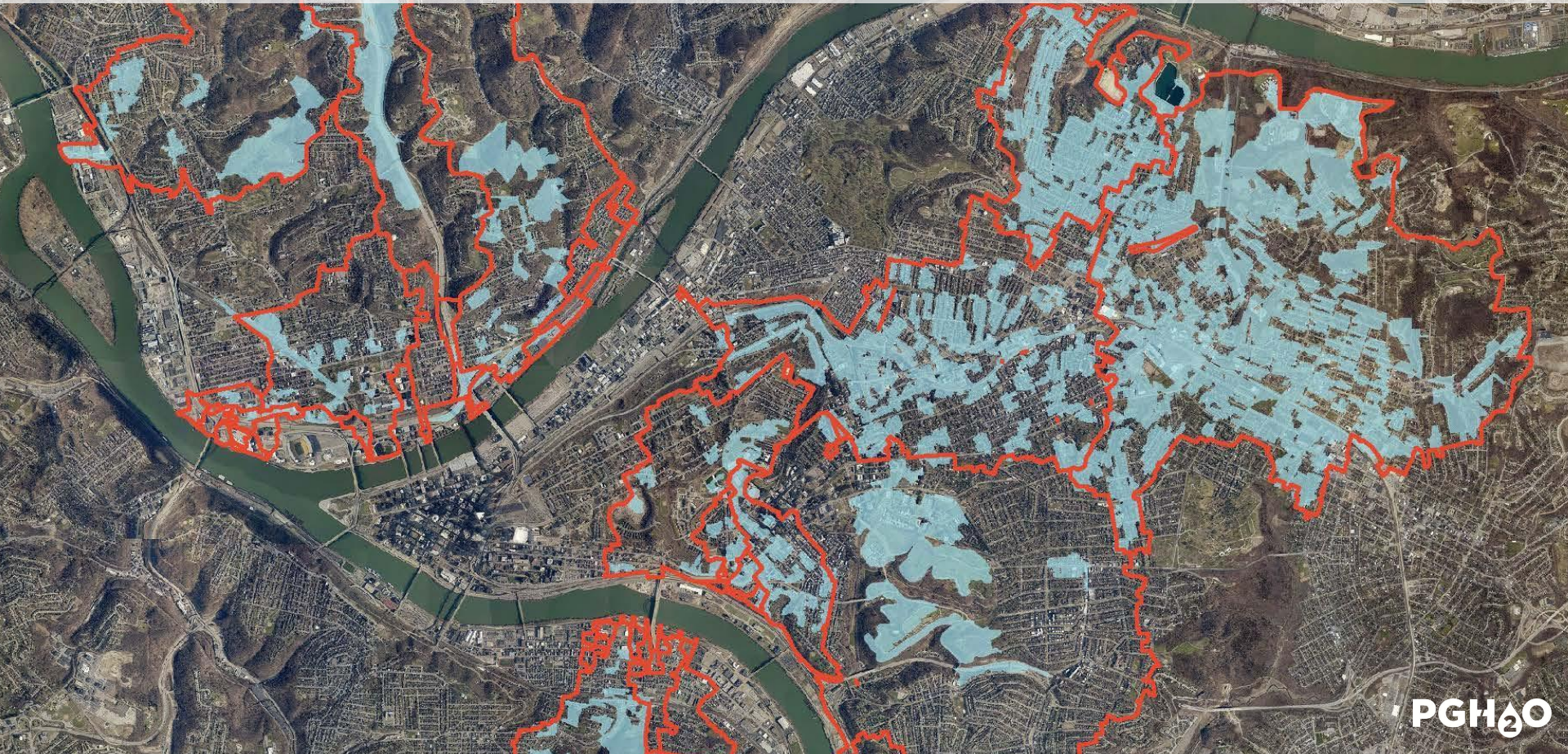


Tanner Springs, Portland OR

- Overarching Goal: Create a stormwater overlay to inform how the city can responsibly redevelop using stormwater as the lens.
- Identify high-yield CSO reduction opportunities sites for GI interventions
- Coordinate with City departments and agencies to ensure a comprehensive evaluation is conducted
- Strategic urban planning based on stormwater management
- Include potential stream separation and daylighting opportunities

PRIORITY SEWERSHEDS

CITY-WIDE STORMWATER OVERLAY



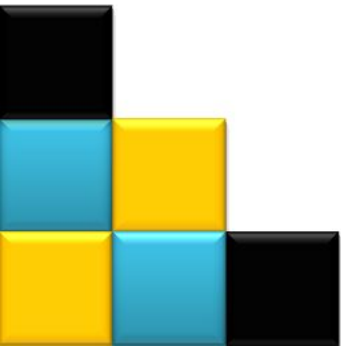
SOHO RUN

CSO Outfall: M-19
Current Priority Ranking: 6
Annual Overflow: 150 MG
Neighborhoods: Uptown,
Bedford Dwellings, Upper
Hill District, Middle Hill
District, Terrace Village and
South Oakland

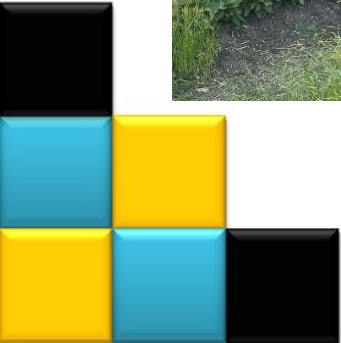


City-Wide Stormwater Overlay

- Lawn + Ophelia Park
 - M-19 + M-19B flows
- M-19
 - Need to manage 55.2 Acres of Impervious Area within the sewershed
- Benefits
 - Goundwater recharge
 - Flood control
 - Improved water quality
 - Community amenity/asset

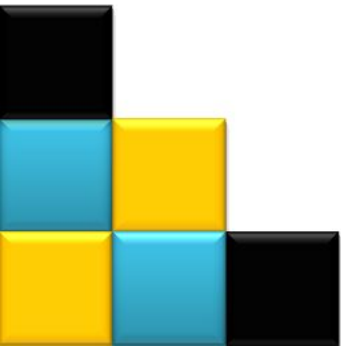


OPPORTUNITIES FOR COMMUNITY ENHANCEMENTS IN THE PARK



Stormwater Trust Fund

- Fee-in-lieu for developers
- Use on City Property
- City Planning + DPW + PWSA



Project Goals

PEOPLE



Foster a **vibrant and diverse community** where the residents of Uptown/West Oakland are an active and vital part of the community's future, benefit directly from improvements and don't solely bear the burden of systems that largely serve other communities



Encourage **new businesses and creative production**, advance training opportunities and, create a clear pathway for residents to access **job opportunities**

PLANET



Elevate individual, community and environmental **health** in the planning, design and development of the community

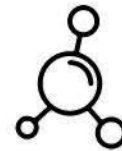


Reduce traffic and offer real **transportation choices** that are cost effective, pleasant and safe for residents and businesses including walking and bicycling

PLACE



Reinforce Uptown's **unique character** by protecting and reusing existing buildings whenever possible and, expanding local arts and community events

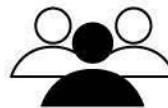


Create **stronger connections** to the Hill, Oakland, Downtown, the Monongahela River, nearby parks and forested slopes, and beyond

PERFORMANCE

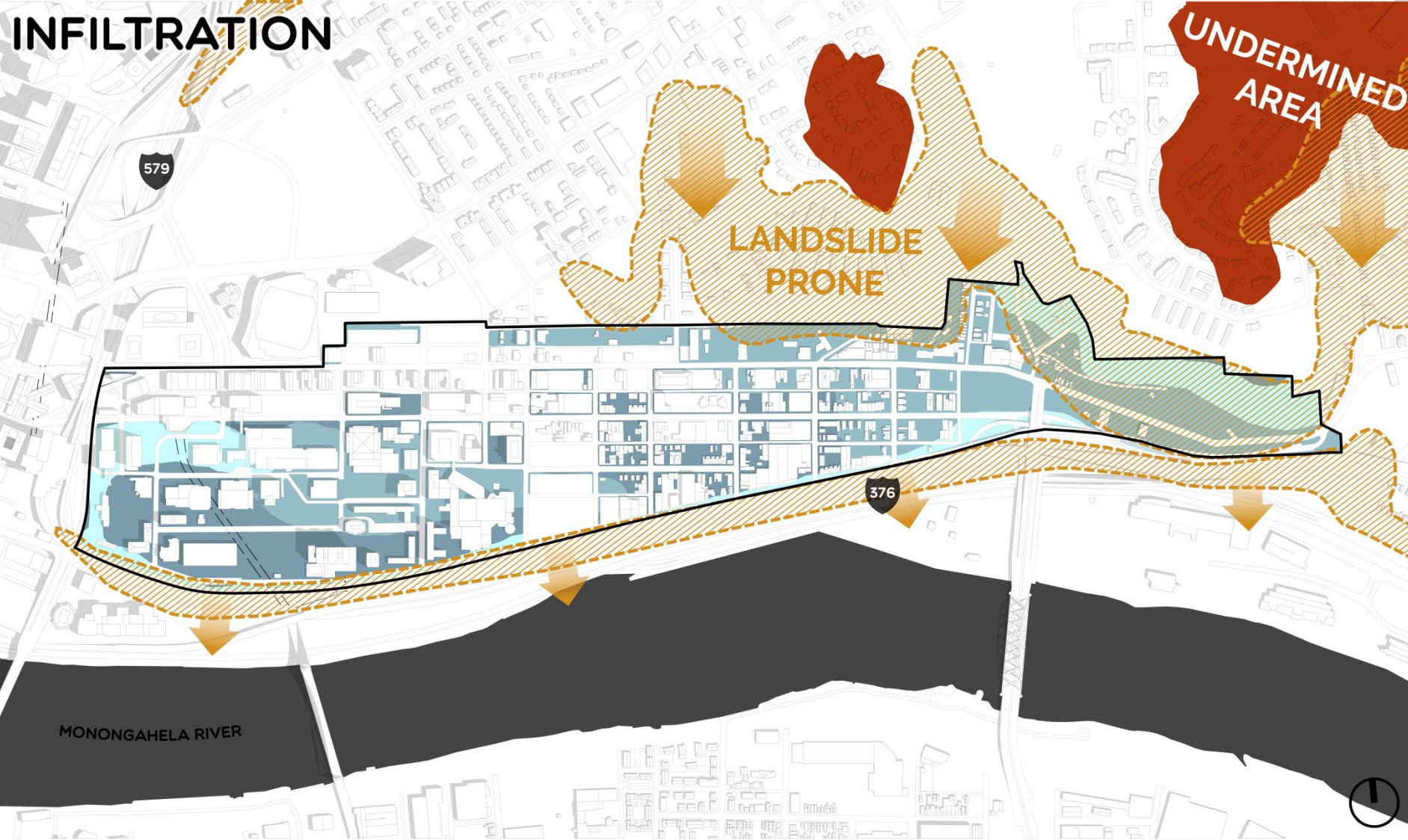


Pursue solutions for water, building systems and district energy that will enable the community to **reach the highest levels of environmental performance and efficiency**



Create partnerships and a model for **sustainable local leadership** that can continue to engage residents and effectively take action in the community

INFILTRATION



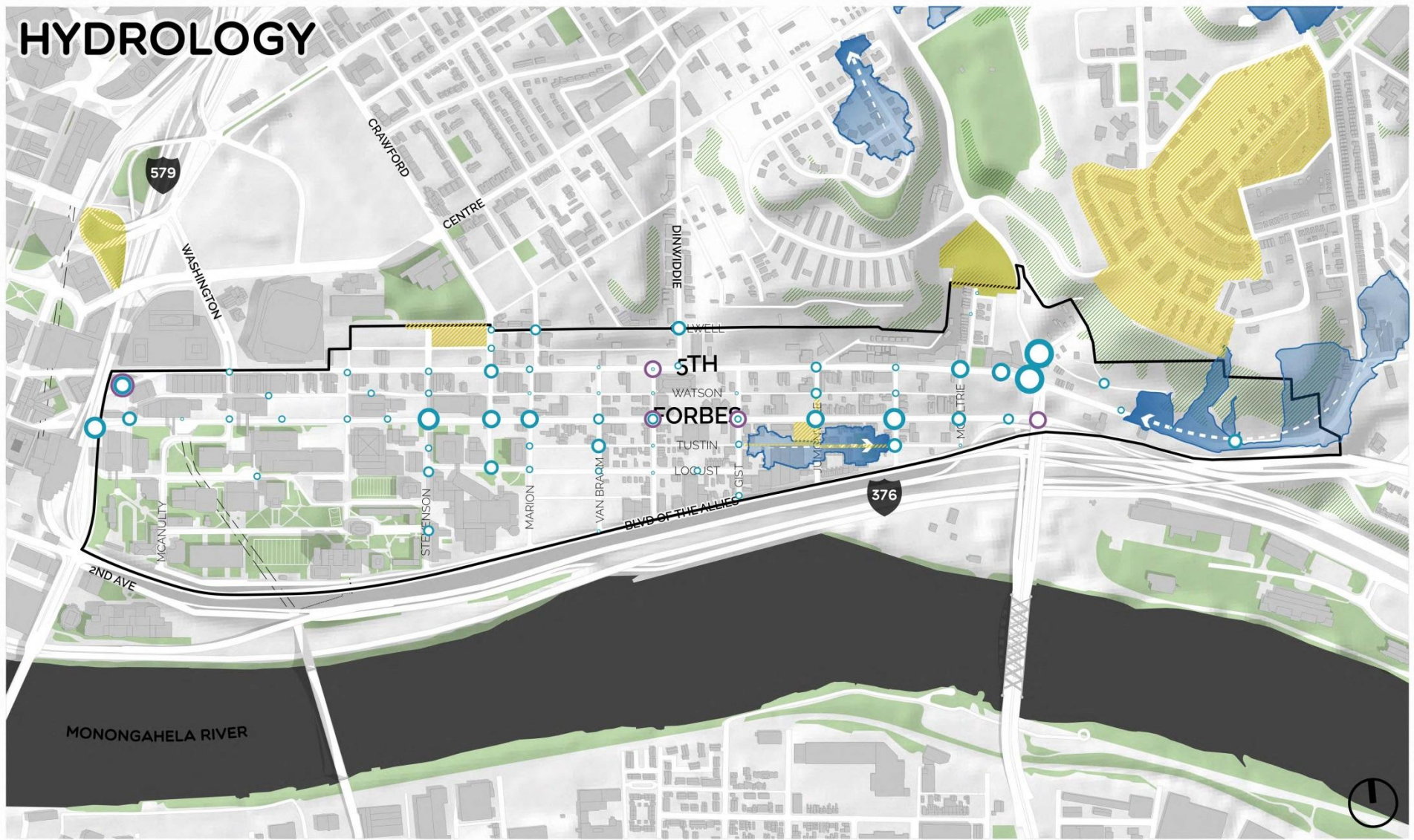
 LANDSLIDE PRONE  UNDERMINED AREA

SOIL CONDITION:

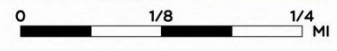
HEALTHY UNHEALTHY



HYDROLOGY

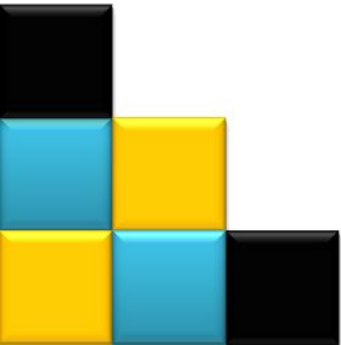


- WOODLANDS
- OPEN SPACE
- PWSA TARGET AREAS
- RAILROAD
- WATER INLET QUANTITIES
- KEY LOW POINTS
- PWSA SUGGESTIONS



Next Steps

- Determine future stewardship of the park
 - Community Stewardship
 - Organization
 - Funding
 - Maintenance
 - City
 - Green infrastructure
 - Design/construction
- Design Process
- Removal of infrastructure
- Implementation



Thank you!

Q&A



pittsburgh
city planning

